



May 2023, Edition 41

# The PORTERREPORT

The Official Newsletter of the Incorporated Village of Port Jefferson

## A Message *from* MAYOR MARGOT GARANT



**Welcome May! - Although I do admit, it feels more like October!** Our Village is coming alive with bold greens and blossoming bulbs and trees! On May 7th, our Farmers Market will have its opening day. Founded through my economic development council, our Farmers Market has become the number one Farmers Market in Suffolk County! So please remember every Sunday to

come down and enjoy the Farmers Market at Jeanne Garant Harborfront Park and help support our East End friends and all the vendors who bring artisanal homemade baked goods, cheeses, and freshly grown and hand-picked produce and flowers!

As I begin to wind down my days at Village Hall, I grow more and more sentimental each day as I reflect on my 14-year tenure and all the wonderful experiences I have had serving as your Mayor. There have been some significant changes in the landscape and some controversy about the apartments, but it remains part of my long-term vision that the stability that these apartments bring to the tax base, as well as the new residents who help our merchants survive during the shoulder seasons, is an overall asset to our Village's financial report card. Uptown is beginning to take shape, albeit slowly, but anytime a blighted neighborhood is revitalized and transformed, it will take time. We need to continue to support the uptown revitalization initiative by being patient and creating incentives to help owners of these properties repurpose and support the initiatives for occupancy over empty windows. With that said, let's please welcome and support our newest business uptown - Halal City - bringing a new delicious food experience to Upper Port!

I am also very proud of our close-knit working relationship with Suffolk County Police. I recently welcomed our new Inspector of the 6th precinct, Joe Condolff, and Deputy Inspector Todd Baron, to our community and thanked them for their service and continued support. In our meeting, Inspector Condolff confirmed we will be receiving two dedicated police officers working every Thursday, Friday & Saturday from 4:00 PM to 4:00 AM who work in direct conjunction with our code bureau, helping keep our Village safe. I'm proud of the new technologies we have implemented such as the license plate readers and our zoom, tilt network of cameras, which connect to the real-time crime center at Suffolk and have proven instrumental in the reduction of crime.

In closing, I was proud to attend the groundbreaking blessing and ceremony for the new emergency room at Mather Hospital. The state-of-the-art new emergency room will help not only serve our residents, but also the surrounding community. Our hospitals must be looked at as vital partners who not only employ professionals in all aspects and help stabilize our community but provide critical services saving lives each and every day. My thanks to the doctors, ladies and gentlemen at Mather Hospital, members of the foundation and the Frey Family for your contributions and hard work to make the beautiful new hospital wing a vital part of the Port Jefferson Village fabric.

**VOTING IN PORT JEFFERSON**

*What you need to know*



#### **VOTER REGISTRATION:**

You must **register to vote** before you can vote in our Village elections.

You can look up your voter registration at <https://voterlookup.elections.ny.gov/>. It will show you your election day poll site. It is for your Town of Brookhaven, Suffolk County, New York State, and National elections. **The Polling place for our Village elections is the Village Center.**

**If you still need to register to vote:** You can do so by going to the New York State Elections Website

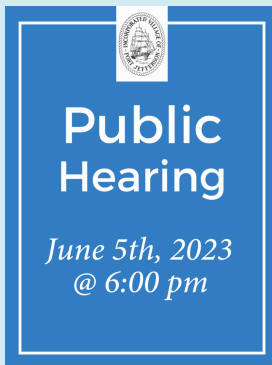
<https://www.elections.ny.gov/VotingRegister.html> to see all of the options for registering. Go to this link to fill out your voter registration form online. <https://www.elections.ny.gov/NYSVoterRegistrationFormEnglish.html>. The form is also available in Spanish.

#### **ABSENTEE BALLOTS:**

**If you cannot vote in person, absentee ballots are available. Here are the details:**

- Absentee ballot applications are available up to election day, June 20th, for walk-ins at Village Hall.
- You can complete your application at Village Hall, and you will be handed an absentee ballot to complete.
- You may email [clerk@portjeff.com](mailto:clerk@portjeff.com) for an absentee ballot application. Please include "Absentee Ballot" in the subject line
- If you prefer to request your absentee ballot application via mail, the last day for the clerk to receive applications for absentee ballots to be mailed to voters is June 13th.

If you have any questions, you can contact our Village Election Official at [clerk@portjeff.com](mailto:clerk@portjeff.com)



## **BROOK ROAD PUBLIC HEARING**

There is a **Public Hearing at the June 5th Village Board of Trustees meeting at 6:00 pm** to consider to Amend Chapter 245 of the Village Code to Add Parking Restrictions on both sides of Brook Road between Old Post Road West and Lower Brook Road/Caroline Avenue.

**We want to hear your input. Please join us and be a part of the discussion!**

# Upcoming Village Meetings May & June

- ☑ May 11th - Planning Board Work Session @ 6:00 pm
- ☑ May 15th - Village Board Meeting @ 6:00pm
- ☑ May 25th - Zoning Board of appeals @ 6:00 pm
- ☑ June 5th - Village Board Meeting @ 6:00 pm
- ☑ June 8th - Planning Board Work Session @ 6:00 pm
- ☑ June 22nd - Zoning Board of appeals @ 6:00 pm
- ☑ June 26th - Village Board Meeting @ 3:30 pm

Go to [PortJeff.com](http://PortJeff.com) to see the full calendar



## TWO NEW WAYS TO GET INVOLVED

*A Task Force and a Committee You Can Join*

Are you passionate about preserving the natural beauty of your community? Do you have a background in arboriculture or revegetation? Then the **Port Jefferson Tree Committee** wants you! Deputy Mayor Snaden and Trustee Kassay are currently forming a new task force to assess the trees on Village

Property and right of ways, and determine the best way to revegetate. As a member of our committee, you will have the opportunity to apply your expertise to a critical issue facing our community. Your work will directly contribute to the preservation of our environment, and the enhancement of our public spaces. So if you have the skills and the drive to make a difference, we want to hear from you. Join us in this important endeavor and be a part of the solution. Email: [trustee-snaden@portjeff.com](mailto:trustee-snaden@portjeff.com) or [trustee-kassay@portjeff.com](mailto:trustee-kassay@portjeff.com) Sign up today and help us make our community a greener, healthier place for generations to come.



### **Join the Election Amendment Task Force**

Do you want to help to shape the future of Port Jefferson Elections? Then consider volunteering to join the Election Amendment Task Force. **Submit your name and letter of interest by Thursday, May 11th, 2023** by emailing Trustee Kassay [trustee-kassay@portjeff.com](mailto:trustee-kassay@portjeff.com). Make sure you put "Election Amendment Task Force" in the subject line of your email.

The Election Amendment Task Force is a group of residents who are giving input on potential changes to the electoral process in our village. Some of the items they will be looking into are term lengths, term limits, and election dates. By joining this independent resident task force, you can help to guide these important conversations and recommendations.

## **THE MAY 1ST PUBLIC HEARING REGARDING THE MARYHAVEN PROPERTY**

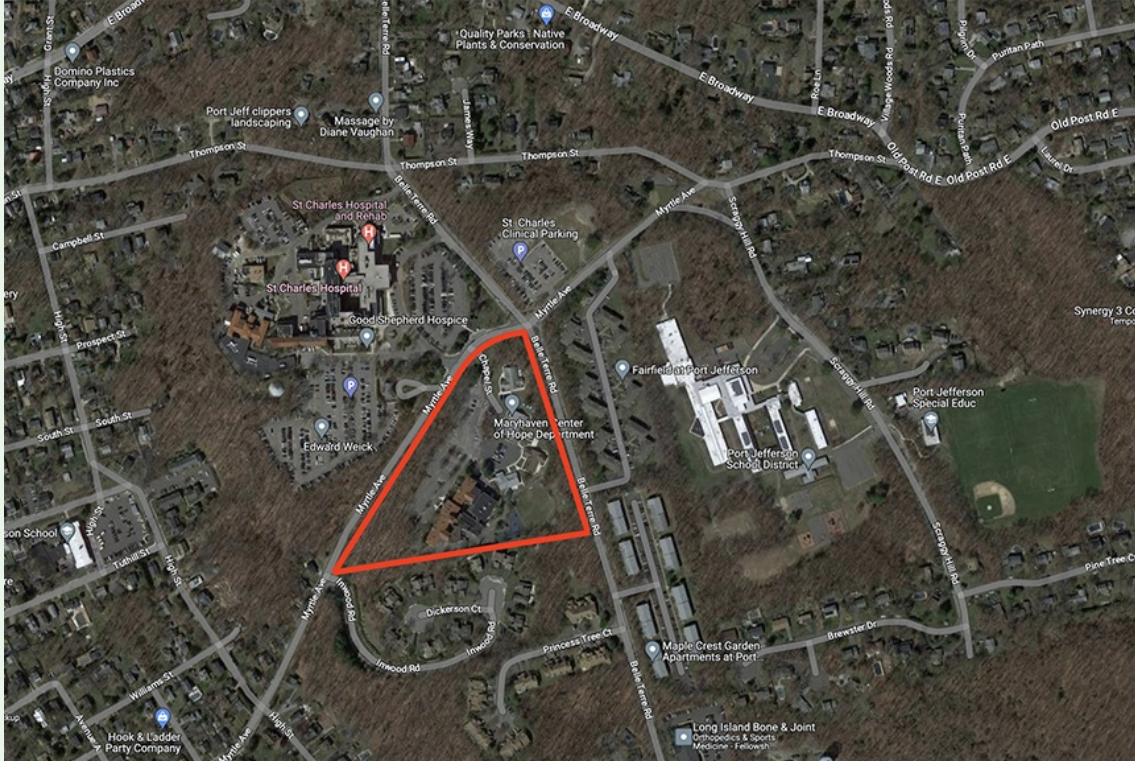
*You still have time to comment*

As a community, we have a responsibility to protect our heritage and preserve our history for future generations. That's why the recent public hearing regarding a proposed code change to **save a historical building at the Maryhaven campus** was so important. The campus is right across the street from St. Charles Hospital (the property owners). We would like to take this opportunity to express our sincere thanks to all of the residents who took the time to attend the public hearing and give their input. We appreciate your willingness to speak out and share your thoughts on this issue.

We want to remind everyone that **your opportunity to have your voice heard is not over**. The recording of the public hearing is available on the Inc. Village of Port Jefferson's YouTube channel. [CLICK HERE](#) to watch. You can view the hearing and get the most up-to-date information on the issue by clicking the provided link.

After watching the recording, we **encourage you to continue to share your thoughts and concerns with the Board of Trustees**. Your input is valuable and will help the board make an informed decision on this critical issue. You can **email our Village Clerk at [clerk@portjeff.com](mailto:clerk@portjeff.com) and put "Response to Public Hearing" in the email's subject line**. All responses need to be received by **Monday, May 22nd**. Thanks!

We are committed to working together with you. Thank you again to all the residents who attended the hearing and shared their valuable input and those who will email their thoughts to our Village Clerk.



## *from* Deputy Mayor Kathianne Snaden



**Happy Spring & Mother's Day!** As a mom of 3 daughters, one of the main reasons I decided to run for Trustee six years ago was the safety of my family and

the community as a whole.

To that end, every year around this time, along with Mayor Garant and Village Clerk Sakovich, I meet with Suffolk County Police Department. We relay the safety needs of the village and discuss hot spots as well as initiatives on both ends.

This year I had the pleasure of speaking with SCPD Inspector Joseph Condolff, Deputy Inspector Todd Barone, Lieutenant Sean Murtha, along with our Chief of Patrol, James Murdocco. I'm happy to report the Whiskey tour will be back in the village Memorial Day through the end of September. That tour consists of two dedicated officers to the Village. We appreciate and once again look forward to working with them this season.

Additionally, we discussed safety at the Village Center, Uptown (including the train station), upcoming events and parades, and daily quality of life issues.

As always, don't hesitate to call 911 for any safety issues. And for any ongoing quality of life concerns, please email me anytime at [trustee-snaden@PortJeff.com](mailto:trustee-snaden@PortJeff.com).

Quality of life and beautification go hand in hand. Our hanging baskets will soon make an appearance as they are still growing in the greenhouse. Additionally, some new street trees will be planted, and garden beds will be filled! I look forward to the native and rain gardens blooming and attracting beautiful bees and butterflies as the warmer weather emerges. I hope you get a chance to walk around and enjoy!

Have a happy, healthy, and safe Spring!



*Deputy Mayor Kathianne Snaden,*

I'd like to publicly thank the 6th precinct for their continued partnership, support, and attention to our village.

*Superintendent Steve Gallagher, and Deputy Attorney Rich Harris working with the School District*

**Kathianne Snaden**

*Trustee*

*Deputy Mayor, Port Jefferson Village*

## PORT JEFFERSON SCHOOL DISTRICT BUDGET AND BOND VOTE

*At Earl L Vandermulen High School*



The school district has provided online resources for residents to learn more about the 2023/2024 School Budget. Go to [https://www.portjeffschools.org/departments/business\\_office](https://www.portjeffschools.org/departments/business_office) to see **budget statements and presentations.**

You can view information about **the proposed bond**, including a video presentation, an architectural plan, the financials, a project list, the estimated debt schedule, the estimated impact, the proposed bond projects, and an archive. Find all of this information at [www.portjeffschools.org/bond/home](http://www.portjeffschools.org/bond/home)

There is a **Budget Hearing on May 9th at 7:00 pm** in the high school auditorium. The bond vote will take place during the annual budget on **Tuesday, May 16, from 6:00 am - 9:00 pm** in the Earl L. Vandermeulen High School cafeteria.

**Happy Voting!**

## SPEED MITIGATION ON BROOK ROAD

*Road safety is our priority*

The Village has been working to implement speed mitigation measures on Brook Road along the football field. **Deputy Mayor Kathianne Snaden has been working with our Superintendent of Highways, Steve Gallagher, on a multi-stage plan to address this issue.** Superintendent Gallagher's comprehensive experience and knowledge have been invaluable in this process.

Currently, there are speed tables in place, and recently the roadway has been repainted to help reduce speed. Studies have shown that wide roadways can be an invitation for excess speed. Narrowing the lines gives a visual cue that can help slow down drivers.

The village recognizes that more needs to be done to ensure public safety. **A public hearing is scheduled for June 5th at 6:00 pm during the Board of Trustees meeting held at Village Hall** to add parking restrictions on both sides of Brook Road between Old Post Road West and



Another partner in our speed mitigation work is the **Port Jefferson School District.** They are looking into installing sidewalks along Brook Road, including seeking outside funding to pay for them. This will further improve safety for students and pedestrians in the area.

We are committed to improving the safety and accessibility of our roads and

Lower Brook Road/Caroline Avenue. We are eager to hear the thoughts and ideas of the community, as the best decisions are informed decisions. Parking will be added at the bottom of the hill where the road is wide enough to safely accommodate both vehicles and pedestrians.

highways. By working together and taking a comprehensive approach to speed mitigation, the village can create a safer and more enjoyable community by addressing the issue on multiple fronts, including education, enforcement, and engineering measures.

## NEW FOUNTAINS

*Hydration for all*



**Caroline Ave Park** is one place many of us pass by while enjoying the Village of Port Jefferson. The park just got a lot cooler with the installation of a **new water fountain**. Not only does it have your usual **drinking fountain**, but it also **features a water bottle filler and, wait for it, a drinking fountain for dogs**. Yes, you read that right. We're catering to our four-legged friends, too.

The fountain, located at the east end of Caroline Ave Park, next to the Barnum parking lot, is a convenient place for a refreshing water fountain. Park-goers are welcoming the new fountain to quench their thirst and refill their water bottles. And let's not forget about our furry friends; dog owners are enjoying the convenience of the fountain as well. It was installed at the perfect time. Now we are ready for those incoming hot summer days.

With the water bottle filler. Port Jefferson is

making every effort to go green, and this is the perfect solution for those eco-conscious folks who want to reduce their environmental footprint while staying hydrated as they are out and about. The filler is easy to use, and park-goers can quickly and easily refill their reusable water bottles.

"The fountain happened because of a collaboration with the Port Jefferson Harbor Education & Arts Conservancy," said Kevin Wood, Port Jefferson's Director of Economic Development. "Port Paws was a new event organized by the Village and PJHEAC last year. Some of the proceeds from that event were used to pay for our great new fountain. Everyone can stay hydrated, and their dogs can stay hydrated too. It's a win-win for everyone."

We're thrilled to provide such a refreshing new feature to the park, and we know it'll be a hit with everyone in the community. So come down to Caroline Ave Park, and check it out. It'll be the coolest thing in Caroline Ave Park for you and your furry friends.



## *from* **Trustee Stan Loucks**



News from the Country Club... The golf course conditions are rapidly improving. The fairway grasses have grown in and are improving daily; the tees are excellent, and the greens are

fast and true. Our membership has grown to over 600, and yet, everyone seems to be getting to play plenty of golf. We have installed GPS systems on our entire fleet of carts, and members are still learning. "Why did my cart stop moving?" They sometimes ask. These new systems not only tell you how far it is to the greens, but they also are programmed to keep you safe and, at the same time, protect your golf course. Contact the Pro shop if you have a problem. They can see where you are. Other features can also be done with our new devices, such as viewing a menu and ordering lunch. In a short period, we will all be experts in the use of the GPS.

I'm sure most members know we had irrigation problems during last season's

We have a major sluiceway running along the left side of hole 8. That water runs under Old Homestead Road and into a large sump above Oakwood Road. We plan to capture that water and store it in ponds on the course. The Architect will identify, and the engineers will figure out the route. Achieving this will beautify the course and help solve our water problem.

Update on the Bluff - it seems that construction is moving at a rapid pace. I have been watching most every day as they grade, lay down heavy burlap, and plant seagrasses on the newly formed slopes. I went down early Monday morning to see if there were washouts from the 5 inches of rain we had. There was no evidence that it had rained. The slopes looked great! This is good news.

We are very confident that the beach will be opened on the scheduled date of June 24th, maybe sooner, but there will be no lifeguards until the 24th.

The Parks Department has completely renovated the bathrooms at East Beach - new stalls, lighting, sinks, dryers, paint, and more. Finally, after a closed season, our beach will be open, and the usual programs will return. We are looking forward to a



drought. Twenty-one days without rain caused severe damage to many of our fairways. We are looking for a solution. We have brought in a golf course architect and an engineering firm to determine how to capture run-off water.

great summer season.

**I wish everyone good health and a wonderful coming season!  
Best Regards.**

**STAN**

*Trustee, Port Jefferson*

[trustee-loucks@portjeff.com](mailto:trustee-loucks@portjeff.com)

## **DON'T BATTLE THE CROWDS THIS SUMMER**

### *No more looking for a parking spot*

The Village of Port Jefferson is launching a new ride-share program called PASSPort this Friday, May 12th.

It's designed to address the increasing traffic congestion on our roads and parking lots. This new service for residents is similar to popular ride-share apps like Uber and Lyft but is exclusively available for use by residents within the Village of Port Jefferson.

The PASSPort program aims to provide residents with a convenient and affordable transportation option for a night out at local restaurants and bars, a shopping spree in our local boutiques, a trip to the Country Club, or some time enjoying the harbor. By using PASSPort, riders can help reduce traffic congestion and make their travel experience more efficient.

PASSPort will be available on Fridays and Saturdays from 4:00 pm to 12:00 am for \$5.00 per person per ride. "We are thrilled to launch PASSPort and offer our residents a new transportation option that will help alleviate traffic congestion in our village," said Deputy Mayor Kathianne Snaden. "PASSPort is a sustainable solution that will provide a better experience for everyone who travels and parks within our village."

To use PASSPort:

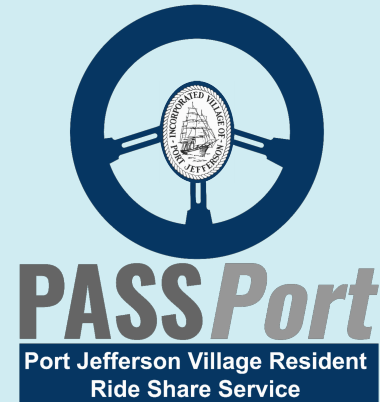
Simply search "PASSPort Port Jeff ride share" and download the app on the apple store or google play.

Set up an account

Then, request a ride.

Our drivers are thoroughly vetted and trained to ensure a safe and comfortable ride experience. The program also offers affordable rates, making it accessible to everyone.

"We are excited to offer this new ride-share program to the residents and visitors of Port Jefferson," said Port Jefferson's Director of Parking and Mobility Kevin Wood. "Our goal is to provide a safe, reliable, and affordable transportation option that will help reduce traffic congestion and make travel and parking within the village more convenient for everyone."



## **A CELEBRATION OF CREATIVITY AND INNOVATION**

### *In Our Own Backyard*

Get ready to experience the ultimate celebration of creativity and innovation at **Long Island Maker Faire at the Village Center!** This unique event brings together makers and innovators from around the country, providing attendees with an opportunity to connect with some of the most creative minds in the industry.

With the **Faire scheduled to run from 10 a.m. to 5 p.m. on Saturday, June 3rd, 2023**, you won't want to miss out on this exciting



opportunity. Attending the Maker Faire Long Island event gives you access to a wealth of innovative projects and cutting-edge technology. You'll leave feeling inspired and motivated to pursue your own creative projects, armed with new insights and ideas to help you take your work to the next level.

But that's not all - the Maker Faire Long Island event is also an excellent opportunity to network with fellow innovators and makers. You'll have the chance to connect with like-minded individuals, share ideas, and collaborate on exciting new projects.

Ready to join in on the fun? **Head to the Maker Faire website to purchase tickets and learn more about the event.** And don't forget to follow Maker Faire Long Island on social media for updates on programming content and schedules.

***We can't wait to see you there!***

## *from* **Trustee Lauren Sheprow**

### ***Let's see...what's new since the April Port e-Report update?***

The Village administration has been weighing the concept of installing Hi Resolution Full graphic Programmable LED Sign at the Department of Public Works (DPW) location at 88 North Country Road. This is a communication tool we have been discussing since last year, after the results from the Communications Audit were presented, suggested to address the expressed need to expand the Village's communications approach to reach people in and around our community who do not access information digitally via social media, the Village website or through email correspondence. It is a tool that can be used to relay emergency messages, major events, public meeting announcements, and Village-wide activities that may be of interest to the community. Specific feedback coming from the DPW was that we need to find alternate ways to communicate to this population, as existing methods are not reaching everyone. DPW gets repeated phone calls from residents, at various times of the year, asking for details on leaf and branch pick up, street cleaning, etc. The illustration shows the design rendering of the sign; messages will be broadcast in high definition (like smart-TV quality). This sign can be purchased at no cost to residents, through the Village's existing American Rescue Plan Act (ARPA) grant funds at a cost of about \$70,000. The design and concept is currently in the hands of the Architectural Review Committee.

If you have any questions or thoughts about the concept for this sign, please email me at [trustee-sheprow@portjeff.com](mailto:trustee-sheprow@portjeff.com).



The Parks & Recreation Advisory Council is fully operational and on board ready to discuss all issues, programs and services related to those areas of the Village. If residents have a concern they would like to express, there are multiple opportunities to be heard, and contacting the Parks & Rec Council is one of them. This is a dedicated slate of volunteers who meet the last Wednesday of each month at 6:30PM in the Village Center. Members include: Rima Potter, Chair; Kelly Juliano (minutes); Lois Kilkenny; Beth Capadanno; Jennifer Sherry; Robert Gross and alternates Mary O'Sullivan; Thomas Provencher; and, Dana Eng. Some of the topics discussed at recent meetings include an opportunity to better utilize Roosevelt Park in the least intrusive manner to the community; a subcommittee was established to review the concept of a pump track/skate park; the Council also reviewed the issues related to the need for added security at the Village Center. It's a great group and is they're taking on a lot of important issues. This month, they are going on a field trip to tour every single park area in Port Jefferson, from the beaches, to Kip Lee Park. If you have any questions or concerns, please contact chair, Rima Potter at [rimapotter@gmail.com](mailto:rimapotter@gmail.com).

*Lauren Sheprow*  
*Port Jefferson Village Trustee*

# Climate Resilience

## Let's plan the future together.

Watch the video and take  
the survey by May 13th to  
have your voice heard

There is one week left to  
give your input and you are  
an important part of this  
process!  
Click the links and participate.

**Survey EXTENDED to  
MAY 13th**

## RE-TREE PORT JEFF INITIATIVE

*A Successful Second Year*



**The Re-Tree Port Jefferson initiative** was back for a second year, with 325 saplings distributed to community members at the Port Jefferson Historical Society's Antique and Garden Weekend. The program to restore native plants in our

**"Native plants** are the foundation of the ecosystem. By educating residents about these beautiful, beneficial species and getting them excited to plant them in their own yards, we are rebuilding habitat for local and migratory birds, pollinators like bees and butterflies, and other important critters. This effort pays back in dividends by attracting wildlife to view in our own backyards, flood mitigation, beautification, and so much more." shared Trustee Kassay "The most rewarding moments of the day were conversations with residents who had planted winterberry shrubs from the giveaway last year, as they all gleefully reported that the shrubs are thriving! Having the next generation of Port Jeffersonians helping to educate local homeowners really elevated the effort's success: Ms. Victoria Snaden's enthusiasm and knowledge were contagious, and we thank her for volunteering her Saturday at this event."

village was organized by our Commissioner of Environmental Sustainability, Trustee Rebecca Kassay. Saplings for this self-sustaining initiative were purchased from the DEC's Saratoga Tree Nursery. The donations collected this year will fund the purchase of next year's saplings.

We received 325 saplings—100 white spruce, 100 red twig dogwood, 100 witch hazel, and 25 American hazelnut trees. Approximately 270 saplings found new homes with community members who visited the Re-Tree Port Jefferson table on Saturday at the Antiques and Garden weekend. Forty saplings will be planted in a tree nursery at the Country Club parkland. They will grow there for approximately five years before being transplanted throughout the village. This is a cost-effective way for the village to revegetate parkland and street-scapes with native shrubs and trees.

And the best part? You can get involved too! If you're interested in planting natives in your yard or community space, ask your local nursery for native species when plant shopping, and look for Re-tree Port Jefferson next year around this same time. You'll receive all of the benefits of these native shrubs and trees for yourself and for everyone else who lives here.



FROM THE  
CONSERVATION  
ADVISORY COMMITTEE

A graphic featuring a green globe with three circular arrows forming a cycle around it. A small lightbulb icon with a green glow is positioned above the globe. The background is a dark green shape on the right side.

Trees do so much valuable work for us such as lowering temperatures in the summer, elevating our mental well-being just by being in their presence, binding steep slopes together with their roots, keeping our aquifers filtered, adding a surprising amount to our property values -- just to name a few of the remarkable contributions trees provide to all of us. While trees accomplish all these things without fanfare, they still need our help to realize their full potential. Show the trees that give you so much a little love by joining our De-Vine campaign in May.



English Ivy may conjure images of storybook cottages, but there's nothing gentle or docile about this plant which can damage buildings and trees alike. Let's look at these recommendations from the Three Village Trust for tackling this spreading, creeping invader. For more information from the Three Village Trust, check out this link: [English Ivy – Three Village Community Trust](#)

Ivy suffocates trees, makes pathways for bacteria and insects and makes trees more vulnerable to breakage and falls due to wind pushing against the matted ivy (the "sail effect") rather than blowing through clean branches. Ivy also works its way into crevices such as brickwork, window frames and foundation cracks leading to costly repairs.

Once ivy has climbed high into a tree or structure, it produces berries that are attractive to birds. Before you know it, ivy seeds are spreading far and wide, but here are ways to combat it:

1. Don't plant it or transplant it - consider non-invasive groundcovers instead.
2. Use small and large tools such as hand clippers, loppers and even hacksaws depending on the width of the offending vine.
3. Pull up small new plants you spot in your lawn or garden beds.
4. Cut back or sever vines growing up from the ground and let them die back before pulling down.
5. Dispose of all vines and roots in the garbage - do not try to compost or dump on roadsides!

Always wear protective clothing, gloves and eyewear. The oil from English Ivy is poisonous, avoid ingesting it. Take care to avoid skin rashes from exposure to the oil of the plant which is similar to poison ivy. Here's a link for more information on English Ivy: <https://www.invasive.org/alien/pubs/midatlantic/hehe.htm>

Tangling with English Ivy is a longhaul battle. Try to make the most of your efforts by working in pairs or small groups. Offer to help neighbors with their ivy in exchange for help with yours. Consider making an annual Spring get-together with friends and neighbors to keep this creeping menace at bay once you've made progress. After all your hard work, you'll deserve a chance to delight in the de-vine work you've done!



*Photos taken by Kelly DeVine*

*from* **Trustee Rebecca Kassay**



Happy May, Port Jefferson! As spring blossoms, so do a great many opportunities for you to connect with nature here in Port Jefferson Village.

Many thanks to the volunteers who made this possible, and for those who donated funds to support next year's sapling purchases. We are already looking forward to Arbor Day 2024! The remaining saplings will be planted in a tree nursery on the Port Jeff Country Club parkland, where they will grow to a more substantial size before being transplanted throughout the Village.

Have you popped by the Beach Street

Beginning on a soggy note, it is impossible to over-exaggerate the value of your 30 minute investment of time to watch and respond to the April 5th Climate Resilience Presentation. This video is available on [PJV official YouTube channel](#), and we urge all community members to watch the video and complete the corresponding survey to guide future Village actions regarding flood mitigation. Survey link: <https://forms.gle/dTKJoBmG4Tc91RDZ9> The deadline for survey submissions has been extended to **THIS SATURDAY, MAY 13TH**; don't miss this opportunity to let your voice be heard!

Looking ahead to some summer civic opportunities, please consider participating in one (or both) of these new resident task forces: the PJV Tree Committee and/or the Election Amendment Task Force. Residents can email with interest by Thursday, May 11th - [trustee-kassay@portjeff.com](mailto:trustee-kassay@portjeff.com) .

It was an absolute joy to see so many residents at the Re-Tree PJV table last Saturday during Antiques and Garden Weekend. We handed over 250 native tree and shrub saplings out to over 100 community members.

Community Garden yet this season? Volunteers rolled up their sleeves this past Wednesday to plant native shrub saplings and native pollinator plants to add aesthetic and ecological value to this Village parkland. Volunteers also began de-vining efforts, stripping off the English Ivy for the benefit of the parkland's majestic trees. These efforts were followed by a tour of the community garden for the Suwasset Garden Club; we look forward to collaborating with these insightful women on upcoming Village garden projects. All community members are invited to the next educational event at the Beach Street Garden- a Gardening 101 Workshop- to be held on Wednesday, May 17th, at 6:30pm.

Whatever you do, be sure to stop and smell the sweet spring flowers as they bloom this month, and enjoy the sunshine after all that rain!

Enthusiastically,

*Trustee, Port Jefferson*  
[trustee-Kassay@portjeff.com](mailto:trustee-Kassay@portjeff.com)





# Port Jefferson Village 2023

Photo: Charmaine Famularo



**THE FARMERS MARKET**

**Harborfront Park**  
 Sundays: May 7 - Nov 19, 9am - 2pm  
 Rain Location: The Village Center

**MOVIES ON THE HARBOR**

**TUESDAYS - DUSK**  
 Harborfront Park Lawn, Rain date: next evening.  
 Sponsored by the Port Jefferson Recreation

July 11 Sing 2  
 July 18 Here Today  
 Aug 1 Dream Horse  
 Aug 8 In the Heights

- May 1-31 'Spring Thing Raffle' Play at Participating PJ Retailers Assoc
- May 21 Mather/Northwell Health Walk
- June 3 Eastern LI Maker Faire (Long Island Explorium), Village Center
- June 30 Sounds of the Sound, PJ Ferry, Ticket Required, 6:30-9:30pm
- July 3 PJV Fireworks, (Resident & PJCC Members) at the beach, rain date: July 7
- July 4 PJFD's 4th of July Parade, 10am
- July 15-16 Port Paws Dock Dogs, Joe Erland Field, www.portpawsdogfest.com
- July 29 Port Palooza, Harborfront Park stage & Port Jeff Brewery stage, www.portpalooza.com
- Aug 17 PJ Village Annual Golf Outing, residents, Port Jefferson Country Club
- Aug 19 Sea Shanty Festival, Harborfront Park & Performance Stage, 12-6pm
- Aug 19-20 12<sup>th</sup> LISEC Sikaflex Boat Build, Village Center, 9am-4pm
- Sept 9 2023 Village Cup Regatta, Harborfront Park
- Sept 9 9<sup>th</sup> Annual Culper Spy Day, Drowned Meadow Museum, 10am-3pm
- Sept 16 9<sup>th</sup> Annual Dragon Boat Race Festival, Harborfront Park, 8am-5pm
- Sept 17 Mustang Show, Village Center, 9am-3pm, rain date: Sept 24
- Sept 23 Hill Climb, Village Center, Harborfront Park, 8am - 2pm, rain date: Sept 30
- Oct 1-31 Paint Port Pink
- Oct 14 35<sup>th</sup> PJ Historical Society Country Auction, Mather Museum, 9am
- Oct 16-Nov 1 Self-Guided Fall Artwalk, Village-wide
- Oct 21 Harvest Fest, Village-wide, 91m - 5pm, rain date: Oct 22
- Oct 21 Chowder Crawl, Village-wide, 12-4pm, rain date: Oct 22
- Oct 21 Window Painting Contest, Village Center, 10am-3pm, rain date: Oct 22
- Oct 31 Kids Halloween Party, (Residents Only) Country Club, 5-7pm
- Nov 24 Outdoor Ice Skating on the Harbor Opens, Village Center
- Nov 25 Small Business Saturday, Village-wide, 9am-5pm
- Nov 26 Santa Parade & Santa Visit, Main St. parade to the Village Center, 3-6pm
- Dec 1-Jan 2 Festival of Trees, Village Center
- Dec 1-Jan 2 Window Decorating Contest, Village-wide
- Dec 2-3 27<sup>th</sup> Annual Charles Dickens Festival, Village-wide

**SUNSET CONCERTS**

**WEDNESDAYS - 6:30 - 8 PM -RAIN OR SHINE**  
 Harborfront Park, Performance Stage  
 Sponsored by the Greater Port Jefferson Arts Council

July 5 The Well Diggers  
 July 12 Quarter Horse  
 July 19 Arbutus & Vine  
 July 26 "Pure Joy" with Paige Patterson  
 Aug 2 Roger Street Friedman  
 Aug 9 The New Students  
 Aug 16 Teddy Kumpel & Nome Sane?  
 Aug 23 Gene Casey & The Lone Sharks  
 Aug 30 Kaido

**CHILDREN'S SHOWS**

**THURSDAYS - 6 PM**  
 Harborfront Park, Performance Stage  
 Sponsored by the Port Jefferson Recreation

July 27 Magic of Reading, Magic Show  
 Aug 3 DIDI Maxx DJ Dance Party  
 Aug 17 Puppet Extravaganza Show

**HARBORSIDE CONCERT SERIES**

**THURSDAYS - 7 PM**  
 Harborfront Park, Show Mobile  
 Sponsored by Port Jefferson Recreation  
 \*Featured Concert Sponsored by The Port Jefferson Ferry

July 6 Solid 70s  
 July 13 Bangos  
 July 20 Southbound (Country)  
 Aug 10 Fleetwood Macked - Tribute Band  
 \*Aug 24 Foreign Journey - special guest Randy Jackson, Concert on Ferry Dock

**EAST & WEST BEACHES**

**June 24 - September 4, 2023**  
 • Lifeguards on duty 10am - 6pm, daily  
 • Resident Only, Parking Permits Required

# Recreation

SPRING / SUMMER 2023

BEACHES PARKS HARBORFRONT PARK ADULTS TEENS MOVIES CONCERTS YOUTHS SUMMER CAMP PJCC TENNIS



**Register NOW!**

## PORT JEFFERSON Summer CAMP!

**FULL DAY**      **HALF DAY**

- SWIM LESSONS
- TENNIS INSTRUCTION
- ART CLASS
- BEACH / FISHING
- CRAFTS
- SPORTS / OUTDOOR FUN

**6-12 YEARS OLD**  
5 / 3 DAY PROGRAMS

For more information call 631-802-2160

Register for Camp

## Free Senior Clubs at The Port Jefferson Village Center!

Free Transportation from your home to the Village center (residents only)

WEDNESDAYS	THURSDAYS
-WATERCOLORING CLASS	-PENCIL DRAWING
-GENTLE CHAIR EXERCISE	-KNITTERS NOOK & CROCHET
-BOOK CLUB	-HERE & NOW CAFE

Register Here!

## GROUP DOG TRAINING CLASSES

*Passion for Pups Training*

This 6 week group class will teach participating dog owners all of the basic obedience commands like sit, stay, come, off, leave it and a heel command. I'll also address some minor behavior issues such as house breaking, leash reactivity, barking and table surfing. It is designed for dog owners who are having difficulty controlling their dog's behavior. I will teach them how to have the well mannered dog they deserve at home, on walks and in groups. This class is not recommended for puppies under 6 months old or aggressive dogs.

**Time:** 10 - 11am  
**Location:** Joe Erland Field, Caroline Ave, Port Jefferson, NY 11777

**Spring Class 1:** March 26, April 2, 16, 23, 30, May 7, 2023 (No class Easter: April 9)

**Spring Class 2:** May 21, 28, June 4, 11, 18, 25

**Summer Class:** August 20, 27, September 3, 10, 17, 24

**Fall Advanced Class:** October 1, 8, 15, 22, 29, November 5

**Fee:** \$160 Resident per session  
\$170 Non Resident per session

**Register:** Online at PortJeff.com  
**Rec Office:** (631) 802-2160

**Instructor:** Allen Kirsch, owner of Passion for Pups Training, LLC. Allen is a professional dog trainer that trains owners and their dogs in basic to advanced obedience and corrects behavioral issues. He uses a balanced training method with an emphasis on positive reward. Allen is also a retired (MTAPD) NY's certified police K9 Trainer and Examiner with over 15 years of experience. He has experience in training dogs in large and small groups. He also has experience in scent detection, tracking, agility, and protection. He is a certified judge and trainer with the United States Police Canine Association. He is a certified AKC Canine Good Citizen Evaluator and Lifetime dog owner with a passion for working with dogs and their owners.

Register Here!

**American Red Cross**

**American Red Cross CPR/AED/First Aid Re-Cert Classes**


Is your American Red Cross CPR/AED/First Aid Certificate expired? Join us at the Port Jefferson Village Center with Peggy Tuttle, American Red Cross Instructor on May 5th or June 5th to get certified. You must Register today at [www.portjeff.com](http://www.portjeff.com)

**DATE -** Friday May 5th or Monday June 5th  
**TIME -** 5 - 8 PM  
**LOCATION -** Port Jefferson Village Center  
**FEE -** \$85 Per Person

register online@[www.portjeff.com](http://www.portjeff.com) or call 631-802-2160  
PORT JEFFERSON VILLAGE CENTER, 101-A EAST BROADWAY, PORT JEFFERSON, NY 11777

Register Here!





**Writer's Journey**  
With Instructor Anne Kelly-Edmunds

"This writing workshop will guide you on your path to give voice to the writer within you."  
Memoir. Fiction. Essay. Poetry. Please bring a notebook and pen.

**Location:** The Village Center  
**Time:** 6:45 - 8:45pm  
**Dates:** Tuesdays  
Session 1: February 21, 28, March 7, 14, 21, 28, 2023  
Session 2: May 23, 30, June 6, 13, 20, 27, 2023  
Session 3: September 12, 19, 26, October 3, 10, 17, 2023  
**Fee:** \$100 Residents, \$110 Non-Residents  
**Registration:** Online @ [www.PortJeff.com](http://www.PortJeff.com)

**COME AND BE INSPIRED!**  
The Village Center, 101A East Broadway, Port Jefferson  
Port Jefferson Recreation Office: 631-802-2160

Register Here!



**Calling All Senior Intermediate Mahjong Players**

**Wednesdays, 10am - 2pm**  
**Port Jefferson Village Center**

Senior intermediate players only.  
Must bring your own Mahjong set.  
If you have your own group, please join us.

The Village Center  
101-A East Broadway, Port Jefferson Village  
Recreation Office: 631-802-2160

Register Here!



**Port Jefferson Tennis LADDER**

**INTERMEDIATES ONLY / COED**

Join Coach Alex For your Doubles Tennis play program.

**DATE**  
FRIDAYS - JULY 14, 21, 28, AUGUST 4, 11, 18

**TIME**  
10:00 - 11:30AM

**LOCATION**  
Kip Lee Park Outdoor Tennis Courts, PJ Village

**FEE**  
FREE for Port Jefferson Village Residents, Non-Residents \$40

This program is perfect for intermediate player only. Not sure of your level check with Coach Alex.

Please wear sneakers, bring your tennis racket and water bottle.

register [online@www.portjeff.com](mailto:online@www.portjeff.com)  
or call 631-802-2160

Register Here!

**seven Local ARTIST**

EXHIBITION MAY 1 - JUNE 2

GAIL CHASE  
MARY COCHRANE  
ELLEN FERRIGNO  
LESLIE HAND  
KATHLEEN McARDLE  
BARBARA SIEGEL  
SUSAN TRAWICK



**Join us!**  
**RECEPTION MAY 12**  
5:30 - 7 PM

SPONSORED BY THE INCORPORATED VILLAGE OF PORT JEFFERSON & THE CONSERVANCY  
BUILDING HOURS 9AM - 9 PM

PORT JEFFERSON GALLERY AT THE VILLAGE CENTER

## What's New in Recreation for May

Easy online Registration @ <https://portjeff.com/recreation-2/>  
(631) 802-2160



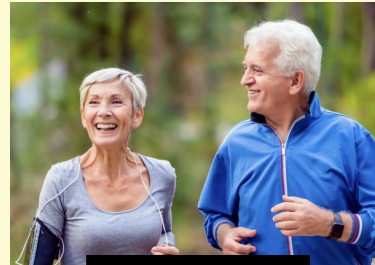
**Adult Programs**  
[Click Here](#)

**ADULT**  
Adult Beginner Tennis



**Youth Programs**  
[Click Here](#)

**YOUTH**  
Summer Camp



**Senior Programs**  
[Click Here](#)

**SENIOR CLUBS**  
Watercolor - Wed

Adult Intermediate Tennis  
Tennis Ladder  
Cornhole League  
American Red Cross Class  
Walking Club  
Softball League  
Dog Training Classes  
Meditation in the Park -Free  
Pickleball  
Senior Clubs  
Writer's Journey  
Huner's Fitness Programs:  
Call (631) 974-4747  
Horseback Riding:  
Call (631) 802-2160  
Karate by Tae Kwon Do:  
Call (631) 630-6575

Discovery Camp  
Coed Youth Baseball/Pitch  
Basketball Camp  
Basketball Coed Clinic  
Pickleball  
Swim Lessons  
Artists & Friends

Teen Tennis Club 12-17vrs  
Youth Tennis Green 7-10  
vrs  
Youth Tennis Red 4-6 vrs

Gentle Chair Exercise- Wed  
Book Club - Wed  
Here & Now - Thurs  
Knitter's Nook/Crochet-  
Corner - Thurs  
Pencil Drawing - Thurs

## KAYAK RACK SPOTS STILL AVAILABLE

*A few are available at Crystal Brook Hollow Road*



We're excited to announce that we have a few open spots available on our kayak rack at Crystal Brook Hollow Rd.

### To apply for a spot:

Visit [www.portjeff.com/forms](http://www.portjeff.com/forms)

Click on the Kayak application form under the Village Hall section.

Print out the application and fill it out completely

Deliver or send it to Village Hall as soon as possible.

### Address your envelope to:

**Kayak Lottery, 121 West Broadway, Port Jefferson, New York 11777.**

Enjoy your time on the beautiful Port Jefferson waters!

**MEET**  
*the*  
**TEAM**



*Meet our team. Their stories are inspiring, and they provide excellent service to all who live here and visit. We will highlight a new professional every month and introduce you to the most amazing and talented individuals that make Port Jefferson Village so special. These are people who bring their experience and dedication every single day. When they say it takes a Village, they're talking about the people of Port Jefferson Village!*



### Meet Chris Furchert

We are honored to introduce you to Chris Furchert. Having Chris as our full-time mechanic has

been a game-changer for the Port Jefferson Country Club. Chris's expertise and experience allows him to diagnose and fix any problems that arise quickly, saving us valuable time and money.

Chris is proud to say that in his 23 years with us, he has only sent out one piece of machinery to be fixed outside the club. That's a testament to his skill and dedication to his work. Having someone as talented as Chris on our team has made a significant impact on our operations, and we are grateful for everything he does.

Whether it is diagnosing intermittent problems or fixing unexpected breakdowns, Chris is an invaluable asset. He takes pride in his work and always strives to maintain our equipment in top-notch condition. We couldn't ask for a better mechanic, and we feel fortunate to have him on our team.

Chris Furchert's co-workers have nothing but high praise for the invaluable role he plays at the Port Jefferson Country Club. Ron Carlson, the Greens Chairman, notes that the general public rarely sees Chris, yet he works tirelessly behind the scenes to maintain a vast amount of expensive machinery. "Chris arrives each morning at 4:30am to ensure that all equipment is in perfect working order, allowing Superintendent Sullivan to direct his crew of 13 with ease." Shares Ron.

Pat Sullivan, our golf course superintendent, emphasizes that Chris's role in keeping the golf course running smoothly cannot be overstated. "His attention to detail and dedication to ensuring that all machines are in perfect working order are integral to the day-to-day operations of the course.

Without Chris's expertise, my staff and I would struggle to keep up with the demands of maintaining such a beautiful and challenging course. Any success that we have as a team is largely due to Chris's hard work and expertise." says Pat.

Trustee Stan Locks sings Chris Furchert's praises, calling him a true professional who is an absolute treasure in the village. "Chris is the best mechanic on Long Island, and his depth of knowledge is nothing short of inspiring. His workshop is impeccably clean and organized. It's a reflection of his commitment to excellence." according to Trustee Locks. Stan shares an encounter he had with Chris in his shop, "A John Deere representative was visiting Chris' shop seeking Chris's expertise in fixing one of their machines - John Deere was asking Chris how to fix their machine. At that moment, I understood that Chris's ability to solve any problem that comes his way is appreciated by everyone he works with including the outside vendors. It is a testament to his skill, encyclopedic knowledge, and willingness to share his knowledge."

But Chris's exceptional talents don't stop there. He is also great to work with, making him an invaluable member of the Port Jefferson Country Club team. His positive attitude and willingness to help out in any way possible make him a true asset to the village. **Chris is a rare gem, and we are fortunate to have him on our team.**



## Contact Us

Village Hall Main Number (631) 473-4724

Building/Planning (631) 473-4744

Planning and Zoning Board of Appeals (631) 473-4744

Constable/Code Enforcement Dispatcher (631) 774-0066

Village Center/Recreation Department (631) 802-2160

Parks Department (631) 473-4724

Port Jefferson Country Club/Membership Services (631) 828-5029

Public Works/Highway (631) 473-4733

Justice Court (631) 473-8287

Tax Assessor (631) 473-4724

PJ Fire Department Emergency (631) 473-3232

PJ Fire Department Information (631) 473-891

PJ Fire Marshall (631) 473-4744 Ext. 316

Parking Department (631) 331-7275

Village Chandlery Building (631) 474-4725

Harbormaster (631) 473-3052

Department of Environmental Conservation (DEC) (631) 444-0200

Port Jeff Library (631) 473-0022

Animal Control (631) 286-4940

Jaegers Animal Rescue (631) 828-9630

## SEE SOMETHING, SAY SOMETHING

Protecting our streets and parks is a top priority. Our 'See Something - Say Something' campaign is designed to make you a part of the solution. Signs are being posted throughout Main Street, in both uptown and downtown areas. The phone number of the supervising Code Officer is prominently displayed on each sign. We encourage residents to report any suspicious activity or other hazards. If you see something unusual or witness any concerning behavior, call (631) 774-0066. The Code Enforcement Bureau will secure the scene

**REPORT ALL  
SAFETY CONCERNS OR  
DISORDERLY BEHAVIOR TO**



**VILLAGE of  
PORT JEFFERSON**

**CALL  
(631) 774-0066**

**10:00 AM to Midnight  
Officers & Cars Respond to  
ALL CALLS**

immediately, investigate the situation and work with SCPD. Our Code officers have a well-established relationship with SCPD. Many of them are retired, active or auxiliary officers. We also have security cameras on our streets. SCPD's real-time crime center is tied into our camera system and can monitor them when necessary. All crimes are reported to Suffolk County Police. It will take all of us to be proactive and diligent to continue with the good work that has already been established.

[Code Red Register Here](#)

[The Official PJV YouTube Channel](#)

### **Village Officials**

Mayor Margot Garant email: [mayorsoffice@portjeff.com](mailto:mayorsoffice@portjeff.com)

Deputy Mayor Kathianne Snaden email: [trustee-snaden@portjeff.com](mailto:trustee-snaden@portjeff.com)

Trustee Stan Loucks email: [trustee-loucks@portjeff.com](mailto:trustee-loucks@portjeff.com)

Trustee Lauren Sheprow email: [trustee-sheprow@portjeff.com](mailto:trustee-sheprow@portjeff.com)

Trustee Rebecca Kassay email: [trustee-kassay@portjeff.com](mailto:trustee-kassay@portjeff.com)

### **Port eReport**

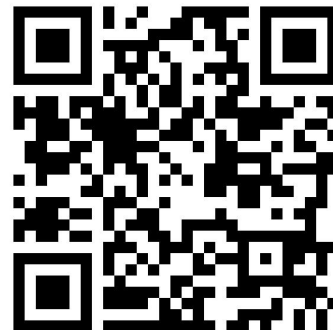
Editor-in-chief - Kathianne Snaden

Editor - Charmaine Famularo

Graphic Artist - Francine G. Moshe



[Visit PortJeff.com](http://PortJeff.com)



The Inc. Village of Port Jefferson | 121 West Broadway, Port Jefferson, NY 11777 631 473-4724

[Unsubscribe french@portjeff.com](mailto:Unsubscribe_french@portjeff.com)

[Update Profile](#) | [Constant Contact Data Notice](#)

Sent by [bfmoshe@portjeff.com](mailto:bfmoshe@portjeff.com)