

The PORTERREPORT

The Official Newsletter of the Incorporated Village of Port Jefferson



A Special Dickens' Message from **MAYOR MARGOT GARANT** and **ALLAN VARELA**

Welcome to the 25th Annual Village of Port Jefferson Charles Dickens Festival

As fall sheds its leafy coat in preparation for winter, the first weekend in December once again plays host to the beloved **Village of Port Jefferson Charles Dickens Festival**.

Join us as we celebrate our **25th Anniversary** through our cherished traditions and spectacular new additions that will add a sparkle and a smile to this magical weekend. We are coming back into the light after the dark COVID days of 2020. However, we are advising that you wear a mask when at an indoor event. We will be following all New York State recommendations for masks and social distancing regulations are set for the weekend as they become available. Some venues, like Theatre Three, have strict vaccine and masking rules. The main thing is



STAY SAFE AND HAVE FUN!

Hailed as **Long Island's Best Festival for 2019 and 2020**, Dickens begins on **Saturday, December 4, running through Sunday, December 5**. Produced by the Greater Port Jefferson-Northern Brookhaven Arts Council in cooperation with the Incorporated Village of Port Jefferson, friends and families from across the Northeast, from all 50 states and, indeed, from around the globe (over 50 guests from the EU in 2019), will gather to celebrate the beloved author as we once again turn our quaint seaport Village into a living Dickens stage.

Born **Charles John Huffam Dickens** (1812-1870), Charles Dickens was arguably the literary superstar of his age, a status that lives on today. Ever the champion of the common man and the downtrodden, his inventive genius has inspired a raft of theatrical performances and a parade of films that portray the drama and redemption of life as a central theme. From *A Tale of Two Cities* to *A Christmas Carol*, Dickens managed to create some of literature's most iconic and memorable personalities. We are proud to carry on this time-honored tradition with our Dickens Festival.

The wondrous **Festival of Trees**, an artistic collection of magnificent Christmas creations are found at the **Port Jefferson Village Center on the second floor** and will be available for **viewing the entire month**. The whimsical **Santa's Workshop**, an incredible tribute to Christmas of yesteryear once again created by the celebrated confection artist Pat Darling, should be on every person's "must see" list because this magical presentation is not to be missed. **Free tickets will be available on Eventbrite to avoid long lines**. Look for it on the **corner of Barnum and West Main Street**. The **Artisan Square**, showing how hand-crafted works were made during Victorian England, **resides in the parking lot by the blinking light where Main Street and East and West Broadway merge**. The spectacular **Tiny Tim's Train Station** (a Toys for Tots location), presented by the Reed Family Train Project, will dazzle at the Harbormaster's **building**. The restaurants offer

Dickensian inspired fare, while the wide range of shops in the Village stay open for extended hours for holiday shopping.

The Village, once again, will be rich with our **troupe of Dickens' Street Characters** and alive with a host of **musical, magical, and theatrical presentations**. The Grand East Main Street **Opening Parade on Saturday morning at 11:00 am** and Pickwick's **Puppet Parade**, this year featuring the new puppets worthy of a major Hollywood feature film, ends the festivities beginning at 5:00 pm on Sunday. Don't miss either one as each parade **features awe-inspiring new attractions**.

So, come one! Come all! A rapturous time for the young and young at heart, the Dickens Festival is sure to delight the Scroogiest of curmudgeons.

A splendid time is guaranteed for all.

Margot Garant
Mayor, Village of Port Jefferson

Allan Varela
Chair, Greater Port Jefferson-Northern Brookhaven
Arts Council



**Use our QR Code to
access the Dickens'
schedule on your phone**

OPTING OUT FOR CANNABIS DISPENSARIES AND ONSITE CONSUMPTION LOUNGES

Maintaining future choices...

This year, New York legalized adult-use recreational marijuana by signing the Marijuana Regulation and Taxation Act (MRTA) and creating an Office of Cannabis Management (OCM). The OCM is responsible for the creation of regulations and implementation of the MRTA.

According to the MRTA, if the municipality does not elect to opt-out of permitting retail onsite consumption and retail dispensaries, it will be assumed the municipality wishes to participate in the retail market. The OCM is tasked with developing regulations for licensing dispensaries and lounges and providing the legal framework outlined in the MRTA. The OCM has not presented these regulations and most municipalities have adopted a "wait and see" approach after the regulations are clarified by the State. After a comprehensive public hearing and vote, Port Jefferson Village also opted-out of dispensaries and onsite consumption lounges within Village boundaries at this time. This action protects our ability to make these choices in the future because municipalities that choose to opt-out can later opt-in to the retail market at any time.

NEW EMERGENCY COMMAND CENTER

Port Jefferson Village is presently in the process of building a new addition to the Building and Planning structure to be partially used as an Emergency Command Center (ECC). The new ECC will house additional emergency supplies and equipment needed by Village employees during and after an emergency event. The existing building will continue to house all Building and Planning department offices and staff.

GET INVOLVED

Helping you find the right volunteer experience.



With so many wonderful local volunteer opportunities, the question is not "if" but "where" to Get Involved! The **Get Involved tab** on the PortJeff.com webpage is

designed to help you find your ideal way to Get Involved based on your age, availability, and interests. You will see Port Jefferson Village-based nonprofit organizations seeking volunteers **like you to contribute time and talent to a wide range of dynamic community efforts**. Whether you decide to donate 3 or 300 hours each year to your community, this gift of time greatly enriches all that the Village of Port Jefferson offers to you, your neighbors, and Village visitors.

Check it out...

<https://portjeff.com/getinvolved>

ACCESSORY STRUCTURE CHANGES

Who doesn't love a 'She Shed' or a 'Man Cave'?!?!'

The Village administration has created more options for our property's accessory buildings. In addition to the PASSIVE use buildings we already have, our new bundle of joy is an ACTIVE use accessory building. Building permits are required, and Village code and state regulations must be followed. If your new addition will be an you wish to construct one of these new accessory structures or convert an existing one; you can start the process by contacting the Building and Planning Department through the resident portal <https://portjeff.com/portal/> or by calling 631-473-4744.

Passive Accessory Structures are simple structures like a tool shed.

These are ***some highlights*** of the requirements:

- It is not to exceed **15 feet** in height
- It is set back **5 feet** from any lot line
- It is located at least **10 feet** from the principal building
- **It may contain electricity.**
- **Plumbing, heating, and cooling are prohibited.**

Active Accessory Structures have more to them, like a pool house or office.

These are ***some highlights*** of the requirements:

- It is not to exceed **15 feet** in height
- On lots of **half an acre or less**, the building shall **not exceed 250 square feet** in size.
- On lots of **over half an acre**, the building shall **not exceed 300 square feet** in size.
- **Cellar or below-grade stories are not permitted.**
- It is set back at least **10 feet** from any lot line and at least **10 feet** from the principal building.
- **It may contain electricity, plumbing, and heating.**
- The building **may include a toilet and sink, showering facilities only permitted if accessible from the exterior of the structure ONLY.**

These are just quick views of some basics. Check with the Building and Planning Department for the full details on our newest family member - the Active Accessory Structure.

KAYAK RACK DEADLINE HAS PASSED

Please pick up your vessels immediately



Please note that we will be removing all vessels on the kayak racks at Harborfront Park, East Beach, and Crystal Brook Hollow. Please pick up your vessel immediately if you want to avoid paying a storage fee. So save yourself some time, money, and hassle and head down to pick up your vessel. Thank You!

Fall Gardening Sessions

Learn and Lend a Hand Pollinator Garden Series
Sunday, November 14th from 12:00 - 2:00 pm on
the corner of Spring St. and High St.

Learn and Lend a Hand Pollinator Garden Series
Saturday, November 20th from 12:00 - 2:00 pm at
Harborfront Park

Community Garden Bulb Planting
Sunday, November 14th from 9:00 - 11:00am
at the Beach St. Community Garden



PLEASE NOTE THE CHANGE OF DATE

Be sure to save the date! Our regular monthly meeting has been moved. All residents are invited to join us on **December 13 at 7:00 pm at Village Hall** for the **Port Jefferson Village Public Meeting**. There will be a lot of information disseminated, including three public hearings. As always, we welcome public comments.

We hope to see you there, bring a friend!

PUBLIC HEARINGS

For your Information...

The Village will be holding a **Public Hearing on November 15th** concerning the **renewal of the franchise**

of Suffolk Cable Corporation in the Village of Port Jefferson.

Additionally, the village will hold **3 Public Hearings** on **December 13th** at **7:00 pm** at **Village Hall**.

- **To change the Code to shorten the parking space requirements from 20' to 18'.**
- **To remove language from the Heliport Code that conflicts with the FAA Requirements.**
- **Add a stop sign at Landing Lane and Old Homestead.**

All residents are encouraged to attend.

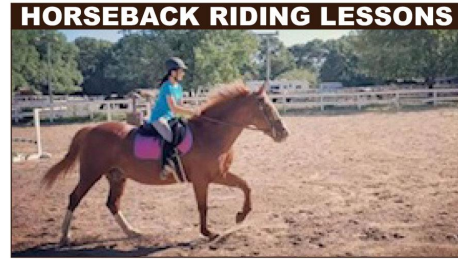
Public Hearings

*November 15th
@ 3:30 pm*

*December 13th
@ 7:00 pm*



Congratulations to Team Cantwell - Champions of the 2021 Adult Softball Snowflake League



HORSEBACK RIDING LESSONS

At Windwood Farms, A Private Barn Located in Suffolk County with an Indoor and Outdoor Arena!

Ages: All Levels and Ages
Location: Windwood Farm, 188 Bellport Ave, Medford, NY 11763
(Indoor Arena in Inclement Weather)
Equipment: Helmets Provided. Please wear long pants and boots with a heel
Register: The Village Center, 2nd fl. Recreation Office. Check or credit card.
Resident: \$220, 30-minute lesson, Package of 4 lessons
Non-Resident: \$230, 30-minute lesson, Package of 4 lessons

Once you register for a package Michelle from Windwood Farms will immediately contact you to set up a date/time for lessons that fit your schedule

All Lesson packages are Valid 6 months from purchase

What's New in Recreation

EASY ONLINE REGISTRATION @PORTJEFF.COM
(631) 802-2160

YOUTH

Youth Basketball COED Clinic: (ages 6-14) Saturdays @ 10:30 am
Youth Basketball COED Skills: (ages 6-14) Wednesdays @4:30pm
Youth Tennis Programs Winter at Spring Street School: Red Ball (ages 3-6) - Beginner Youth Tennis.
Youth Tennis Programs Winter at Spring Street School Orange Ball (ages 7-9) Basic fundamentals and techniques.
Port Jefferson Rowing Program: (ages 15+) So popular. Check for the latest session.
Horseback Riding Lessons: (All Ages) Package of 4 lessons available.

ADULT

Writer's Journey: With Anne Kelly-Edmunds. 3 week January 2022 Mini Session.
Writer's Journey: With Anne Kelly-Edmunds. February/March Session 2022.
Fitness with Nanci Huner: (ages 18 & older) Monday Fitness @ 9am, Monday Stretch @ 10am
Fitness with Nanci Huner: (ages 18 & older) Wednesday Fitness @ 9am, Wednesday Stretch @ 10am
Fitness with Nanci Huner: (ages 18 & older) Friday Fitness @ 9am, Friday Stretch @ 10am
Fitness with Nanci Huner: (ages 18 & older) Saturday Fitness @ 9am
Winter Beginner Tennis Program: (ages 18 & older) Tuesdays at Spring Street School.
Winter Intermediate Tuesday Tennis Program: (ages 18 & older) Tuesdays at Spring Street School.
Horseback Riding Lessons: (All Ages) Package of 4 lessons available.

SENIORS

Our Weekly Senior's Program is returning to the Village Center.
Wednesdays, 10am - 2pm. No sign-up required.

BUS TRIPS

Call: 631-802-2160 for info

VILLAGE CENTER

Rooms with a View to Rent for Corporate and Private Events
Call: 631-802-2160 for info

CELEBRATING OUR HISTORY
Fall Heritage Festival

Saturday, November 13, 2021
Rain Date Nov. 14
12 noon - 4 pm

FREE All Welcome

Drowned Meadow Cottage Museum
Home of the Culper Spy, Phillips Roe
Corner of West Broadway and Barnum Avenue

- * Bring your Family for a Walk Through Revolutionary Times
- * Unveiling New Spy Ring Evidence
- * Time Period Vendors
- * Instructional Camp Cooking: Taste Slow Cooked Foods from Historic Recipes
- * Docent-led Tours
- * Colonial Story Hour: Learn About the Roe Farm in Drowned Meadow
- * Wampum Making Demonstration



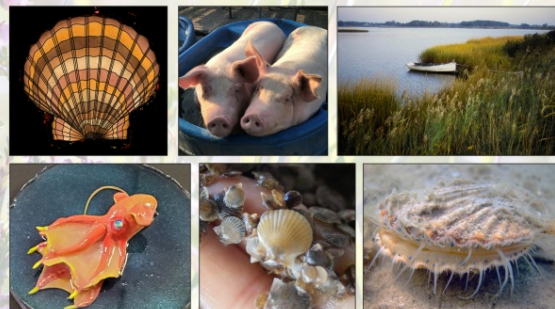
www.PortJeff.com
Sponsored by the Inc. Village of Port Jefferson

Cornell Creates Community

The People and Work Of Cornell Cooperative Extension of Suffolk

Cornell Cooperative Extension of Suffolk County presents a collection of work by local artists and staff members curated to provide a visual interpretation of the important work and mission carried out by the organization.

November 1 - 30, 2021



Cornell Cooperative Extension | Suffolk County

PORT JEFFERSON GALLERY
at The Village Center

THE FARMERS MARKET



Harborfront Park
Every Sunday
May 5 - Nov 14, 9am - 2pm
Rain Location: The Village Center

CALENDAR

- Nov 21 Indoor Farmer's Market, Village Center, 10am-2pm
- Nov 26 Outdoor Ice Skating On The Harbor Opens, Village Center by The RINX
- Nov 27 Small Business Saturday, PJ Chamber, 9am-5pm
- Nov 28 Santa Parade, 3pm

- Dec 1 - Jan 2 Festival of Trees, Village Center
- Dec 3 Dickens' Residents Night
- Dec 4-5 25th Annual Dickens Festival

**Due to Covid regulations, events may change or be canceled.*

PORT JEFF DOCUMENTARY FALL SERIES 7pm at Theatre 3

- MISSION: JOY – FINDING HAPPINESS IN TROUBLED TIMES – Mon. Nov. 15
portjeffdokumentaryseries.com

**SKATING ON THE HARBOR
OPENS
FRIDAY
NOVEMBER 26**

SANTA PARADE 2021 Sunday, November 28, 3pm Main Street



SANTA'S WORKSHOP Drowned Meadow Cottage Museum Corner of Barnum and West Broadway/25A

Sunday, November 28 - 3:30 - 5:00 pm
Please Note: No Tickets Required for this date only

*Saturday, December 4 - 12:00 - 4:30 pm

*Sunday, December 5 - 12:00 - 4:30 pm

*Saturday, December 11 - 12:00 - 4:00 pm

*Please Note: Tickets Required, through Eventbrite Only!!



Mayor Garant and the Board of Trustees
Welcomes the Port Jeff Village Community to

Residents Night*

Friday, December 3
6 ~ 8:30 pm

AN EVENING OF FAMILY FUN!!
AT THE VILLAGE CENTER

- ◆ 2 Free Ice Skating Sessions
6:30 - 7:15 & 7:30-8:15 pm
- ◆ Festival of Trees
- ◆ Visit with Santa
- ◆ DJ & Festive Music
- ◆ Complimentary Refreshments



*For Admission, Please bring your ID with a Port Jefferson Village address



HELP FEED THOSE IN NEED

Please bring a non-perishable food item to be donated
to Infant Jesus Open Cupboard

www.PortJeff.com/Dickens

DICKENS' VOLUNTEERS NEEDED

BUSINESS OPPORTUNITY SPONSOR AN EVENT

*Feature your business
for thousands to see*

Contact Allan at 631- 928-7974 or
email: info@gpjac.org



SPECIAL DICKENS' FAMILY FAVORITES



MRS. DILBER - Scrooge's long-suffering housekeeper shares stories of life with the noted miser in a fun interactive event suitable for the entire family.

FEZZIWIG'S BALL - Stomp to the sounds of an old time Fezziwig barn style contra dance! Swing your partner round and round and clap your hands to a knee slapping beat! Absolute fun for those who love to dance and celebrate. Ideal for groups or individuals!

THE GRAND MAGICAL WIZARDRY SHOW The amazing Grand Magical Wizard will dazzle all who behold his incredible feats of fascinating scientific magic.

TINY TIM'S TRAIN STATION - Enjoy the magic of this antique replica train exhibition at the Harbor Master Building with the whole family and the young at heart.

PIGKWICK'S PUPPET PARADE - Children of all ages will delight in this magnificent puppet parade finale that marches down Main St. Bigger than life animated puppetry was created by volunteers and brings joy to all that attend.

SANTA'S WORKSHOP - Santa and his Elves welcome all to visit Santa's Workshop. Meander through the whimsical rooms in our historic Drowned Meadow House. Twinkling white lights, confection displays, and giant nutcrackers are just a few of the signature elements that bring the Magic of Christmas to life! Ticket Required, through Eventbrite Only!

FESTIVAL OF TREES - Featuring 25 professionally decorated trees on display at the Village Center through-out the month of December.

VICTORIAN RESIDENT NIGHT GALA - A special dedicated Friday night of festivities for Port Jefferson residents on the eve of the Dickens' Festival. Lite refreshments, Santa time, music and ice skating cap the entertainment.

HANDEL'S MESSIAH - Special performance of the North Shore Chamber Choir, under the direction of Jeffrey Schneider, will perform this classic beloved baroque oratorio. The venue holds 350 and is always filled to the rafters. Saturday afternoon.

HORSE & GARRIAGE RIDES - Clop Clop Clop ...Take a scenic ride around our historic East Main and Main Street in our horse and carriages. Six -seat Horse & Wagon for Saturday and Sunday.

GAST OF DICKENS CHARACTERS - Our 120+ cast of Dickens' Characters and over 50+ volunteers brave the elements all weekend to make the Dickens Festival an authentic experience.

OLIVER TWIST'S ARTISAN SQUARE - A tented area devoted to artisans demonstrating 19th century crafts. A variety of blacksmithing, carpentry, weaving, glass making, paint mixing and masonry tradespeople will demonstrate authentic techniques and tools. This interactive Q&A forum encourages festival attendees to learn the evolution of tools from the Industrial Revolution to modern day.

DICKENS

Some events that are not to be missed

The Grand East Main Street Opening Parade:

The Grand East Main Street Opening Parade will play host this year to the Amityville Highland Pipe Band. The band members come together to celebrate the tradition of the Scottish. The Black Watch with stirring music of the pipes and drums. The Amityville Highland Pipe Band is the ONLY civilian band in the world that has been commissioned by Her Royal Majesty, the Queen of England, to wear The Black Watch tartan.

The opening Parade will also feature our extensive cast of street characters and singing groups who provide outdoor entertainment both days and the traditional Port Jefferson-

Bridgeport Ferry Float. The parade starts at 11:00 AM and travels from East Main and Main to the Port Jefferson Village Center for the opening ceremony.



Pickwick's Puppet Parade – Hollywood: Hold Your Breath!

The Festival's closing Pickwick's Puppet Parade will feature the super artistic look for the **giant puppet versions of Marley's Ghost, Christmas Past, Christmas Present and an awe-inspiring Christmas Future** brought to us through the creative efforts of Genevieve Varela and Vin Blangiardo. Supported by a grant from Riverhead Toyota, Gen and Vin have built the stunning new puppets from simple cardboard and Papier-mâché imbued with amazing intensity by this artistic duo. They promise an experience that will last a lifetime. But the action doesn't stop there as the parade will feature the entire **138-piece Longwood High School Marching Band** with instruments alight as a special treat. Also included this year is the **Hook and Ladder Party Company fire truck**. Our honorees, **Margo Garant and Allan Varela** will be on the **Port Jefferson-Bridgeport Ferry Float**, accompanied by the **Arts Council's artist in residence, Andrea Rhude**. We also have a surprise guest star joining us on the float – stay tuned. Please join us for the amazement and fun!



Special Treats:

Traveling around the Village during both days visiting restaurants and shops will be **The Dickens Carolers**, Directed by Bonny Grice, and the fabulous **Jewel Tones**. These exceptional singing groups will join our traditional street characters, carolers and street plays entertaining Dickens Festival attendees. Our special musical groups and characters will be performing on and around the Village both days. This year, the **North Shore Choir** will be performing **Handel's Messiah at the Methodist Church**, located at the corner of Main Street and Spring Street across from Theatre Three. As a very special treat, internationally known **mandolinists Buddy Merriam and Taylor Ackley** will give a concert in the **Methodist Church** starting at 7:00. New for this year will be a special presentation of **three concerts featuring traditional instruments from 1850**. The performances will happen in the **Harbor Cove Room in the Village Center**, third floor street side, featuring Erika the Harpist, Rose Tree (Dulcimer) and Fairchild & Becherer on **Sunday December 5 starting at 12:00**.

25th Annual Charles Dickens Festival Honorees

Mayor Margot Garant and

Allan Varela, Chair of the Greater Port Jefferson Arts Council

As the Mayor of Port Jefferson Village for the last 13 years, the annual Charles Dickens Festival holds a very special place in the heart of Mayor Margot Garant. Founded by her mother, former Mayor Jeanne Garant, 25 years ago, this Best of Long Island event brings joyous merriment to all those who take part in the festivities. Having been directly involved for those 25 years, Margot takes particular delight in carrying on the time-honored traditions so treasured by our community, while opening the door to new events and programs that can carry the spirit of the Festival throughout December.

The Dickens celebration requires year-round planning that Mayor Garant coordinates in conjunction with the Arts Council, with full recognition that all this would not be possible without the continued support of the local community and the Port Jefferson Business Improvement District. Although planning is a year-round endeavor, Mayor Garant affirms, "The elation the festival brings through the mingling of the visitors and residents alike makes all the hard work worth it!" In recent years Margot began the tradition of turning over the Key to the Village to the Street Character Lord Mayor as part of the opening ceremony so she can become magically "chimney-ized," transforming into a chimney sweep. Margot makes the rounds in her sweeping regalia to take photos with visitors and personally thank all the merchants, all the while "keeping spirits light," according to Margot. She plans on supporting the Charles Dickens Festival into the future, keeping the tradition alive in the hearts of all those who share the holiday spirit.



Allan Varela is a composer and performer having released two albums back in 1977 and 1980 with his namesake Varela Band. He is also a noted technical writer having worked

for several major trade publications covering digital systems entering movie and music production including Variety Magazine. Along the way, Varela has always helped groups that serve our community and is celebrating his 30th year on the Board of Directors of the Greater Port Jefferson Arts Council, having joined the organization in 1991. In 2005, he became the Executive Producer of the Charles Dickens Festival as the production responsibilities were given over to the Arts Council. Since that time, the Festival has evolved into a voted Best of Long Island powerhouse of family fun and community engagement, drawing attendees from all 50 states and six European countries. Attendance averages 25,000 visitors over the celebrated two-day event.

According to Varela, "Producing an event of this size truly takes a Village in every sense of the word. Our Board members take on the many different tasks of gathering volunteers and sponsors to ensure the Festival is a grand success." This outreach includes street play and street character rehearsals that begin in August, yielding a host of some 130 costumed characters roaming the streets and visiting the restaurants to the delight of the attendees. This year the production covers some 129 events from magic shows, a contra dance party and pictures with Santa, to horse and wagon rides and concerts that are, for the most part, free to be enjoyed by the public. The main traditions include Santa's Workshop, Tiny Tim's Train Station, Artisan Square and, of course, the fabulous Festival of Trees. "I am very privileged to help to lead this titanic effort put forward by so many people," says Varela. "This Festival puts smiles on faces with appeal to both the young and young at heart. This is the 25th anniversary and plans are already being set for the 26th.

In addition to producing the Dickens Festival, the Varela Band is back together after some 42 years planning a reunion concert... a busy time indeed for Allan!

The community is happy to recognize these two individuals for all the time and talent applied over the years to keep the Dickens Festival alive and growing. This is why Margot and Allan are this year's honorees.



Do you have a picture including a costume of Nan Guzzetta's?



Please send us photos of you wearing a costume from Nan Guzzetta's Antique Costume Shop. Email these photos to trustee-kassay@portjeff.com they could be included in an art show that will be hosted at the Village Center.



SEE SOMETHING, SAY SOMETHING

**REPORT ALL
SAFETY CONCERNS OR
DISORDERLY BEHAVIOR TO**



VILLAGE of
PORT JEFFERSON

**CALL
(631) 774-0066**

**10:00 AM to Midnight
Officers & Cars Respond to
ALL CALLS**

Protecting our streets and parks is a top priority. Our 'See Something - Say Something' campaign is designed to make you a part of the solution. Signs are being posted throughout Main Street, in both uptown and downtown areas. The phone number of the supervising Code Officer is prominently displayed on each sign. We encourage residents to report any suspicious activity or other hazards. If you see something unusual or witness any concerning behavior, call (631) 774-0066. The Code Enforcement Bureau will secure the scene immediately, investigate the situation and work with SCPD. Our Code officers have a well-established relationship with SCPD. Many of them are retired, active or auxiliary officers. We also have security cameras on our streets. SCPD's real-time crime center is tied into our camera system and can monitor them when necessary. All crimes are reported to Suffolk County Police. It will take all of us to be proactive and diligent to continue with the good work that has already been established.

Village Officials

Mayor Margot Garant email: mayorsoffice@portjeff.com

Deputy Mayor Kathianne Snaden email: trustee-snaden@portjeff.com

Trustee Stan Loucks email: trustee-loucks@portjeff.com

Trustee Bruce Miller email: trustee-miller@portjeff.com

Trustee Rebecca Kassay email: trustee-kassay@portjeff.com

Upcoming Village Meetings

Nov 15th @ 3:30 pm at Village Hall

Dec 13th @ 7:00 pm at Village Hall

Port eReport

Editor-in-chief - Kathianne Snaden

Editor - Charmaine Famularo

Graphic Artist - Sue Orifici



Visit PortJeff.com

Submit your photo for the newsletter
to: sorifici@portjeff.com